



119-A Hwy 183
Piedmont, SC 29673
Tech Support(864) 907-6004 (call or text)
Email: Tech@DDMWorks.com

Trifecta Tune for Solstice/Sky

Before you start, you will need:

- Internet access
- Laptop with a USB port and Windows Vista, 7*, or 8 (excluding Windows 8 RT). XP is not supported. **Windows 10:** Must install Dot Net Framework 3.5

**Some computers with Microsoft Windows 7 may require updates to the latest Windows service packs in order to install the product.*

- Make sure your laptop and vehicle are fully charged. (Laptop power settings should be configured to prevent the PC from going to sleep.) *See notes on page 7 regarding Power loss.*
- Access to the email address the order was placed under, your tune files will be emailed to this address along with EZflash software link.
- EZFlash Red tuning cable
- Read the last two pages of this booklet named Important Notes and Tips.



119-A Hwy 183
Piedmont, SC 29673
Tech Support(864) 907-6004 (call or text)
Email: Tech@DDMWorks.com

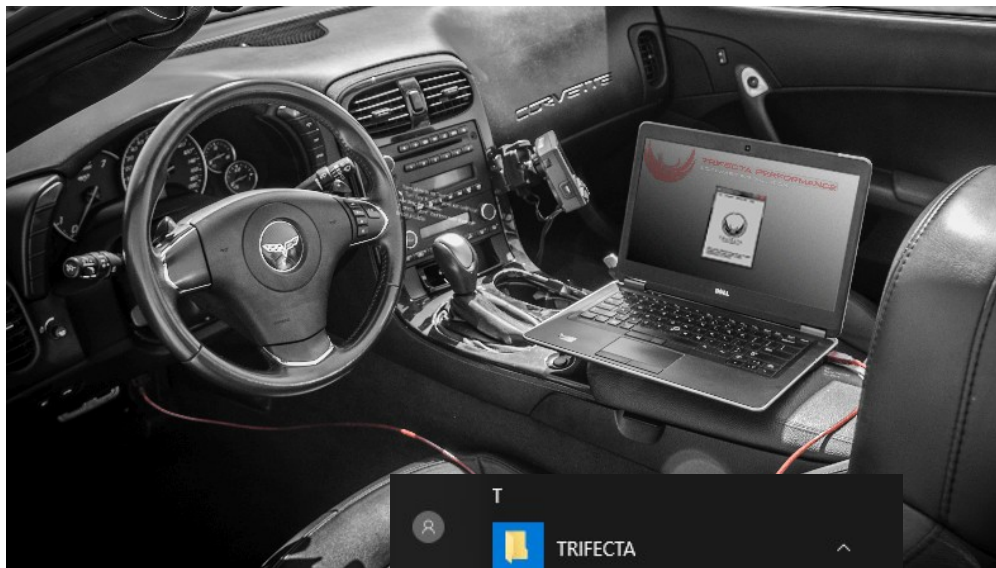
Trifecta Tune for Solstice/Sky

1. Register and log in to [Trifecta Performance](http://www.trifectaperformance.com) website before you can download EZFlash software. Make sure to keep your user name and password you will need these again later.

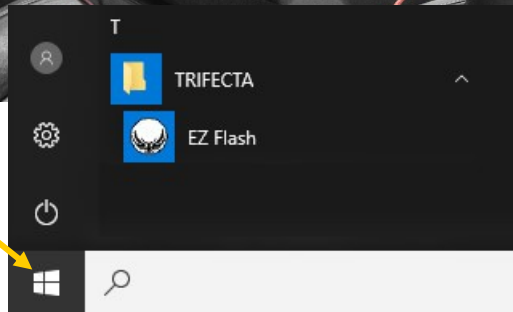
2. Install EZ Flash per the EZ Flash User Guide:

<http://www.trifectaperformance.com/ezflash>

2. Connect to the vehicle via OBD2 port and Laptop USB Port and open EZFlash from the start menu.



Window Start menu



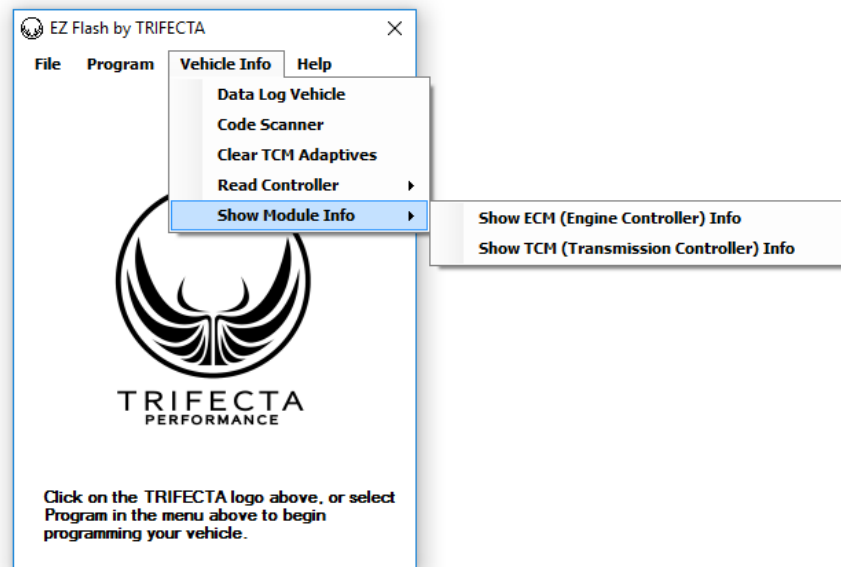


119-A Hwy 183
Piedmont, SC 29673
Tech Support(864) 907-6004 (call or text)
Email: Tech@DDMWorks.com

Trifecta Tune for Solstice/Sky

3. Follow prompts: Vehicle Info--> Show Module Info --> ECM and either take a screenshot or a photo of the output and attach and email it to sales@ddmworks.com. Make sure to include your order number in this email!

Please note: You may need to scroll down in order to capture all the data displayed.



4. Sit back and relax.

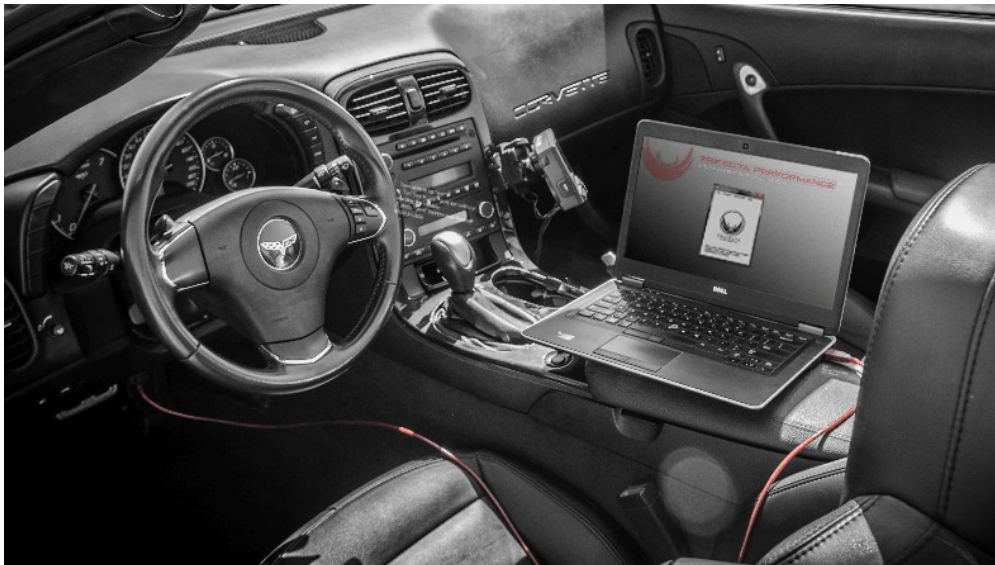
We will submit your screen shot and tune information to Trifecta so they can build your custom tune. While some files may be ready in 2-3 days some may take up to 2 weeks. Feel free to check in with us from time-time, but be assured we will email your tune file as soon as it is available from Trifecta!



119-A Hwy 183
Piedmont, SC 29673
Tech Support(864) 907-6004 (call or text)
Email: Tech@DDMWorks.com

Trifecta Tune for Solstice/Sky

5. You have now received an email from DDMWorks with your tune file. Download the file ending in TRTX that was emailed to you and save it to a location you will be able to find easily.
6. Now, connect to the vehicle via OBD2 port and Laptop USB Port and open the EZFlash user guide.



7. Ensure the vehicle is in Service Mode by holding the 'Start|Stop' button for approximately 10 seconds, or by inserting the key and turning it all the way to the Run position with your foot off the brake.

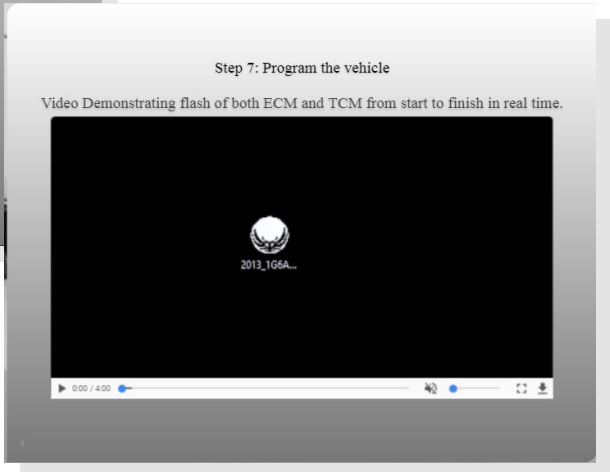
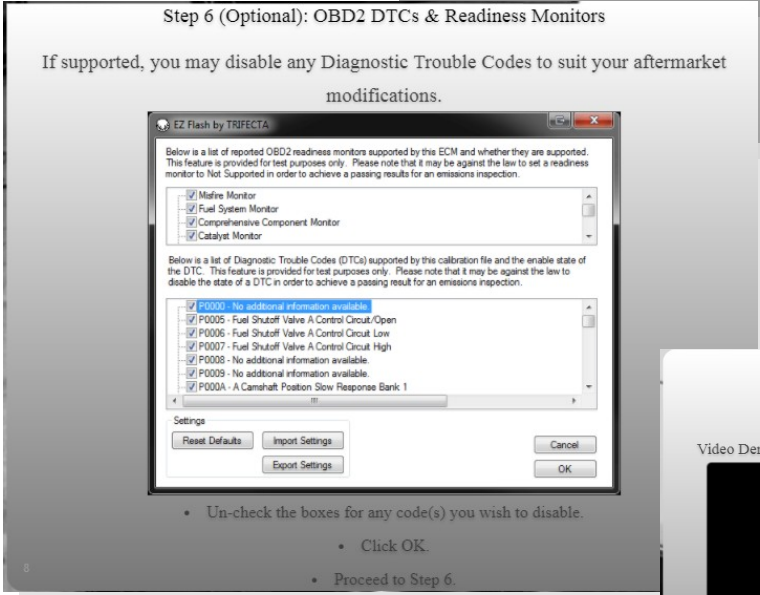
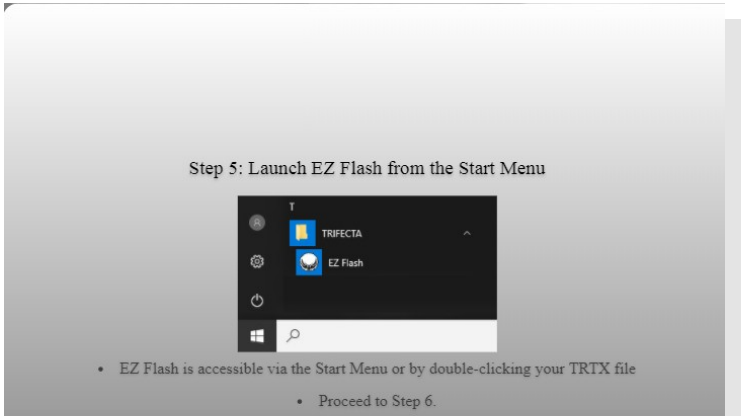
You may now follow the steps (begin on step 5) from the EZFlash guide to complete your tune install.



119-A Hwy 183
Piedmont, SC 29673
Tech Support(864) 907-6004 (call or text)
Email: Tech@DDMWorks.com

Trifecta Tune for Solstice/Sky

EZFlash user guide screenshots:



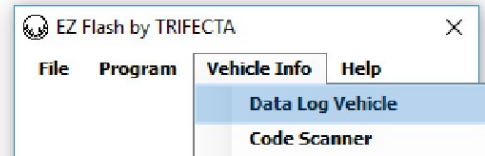


119-A Hwy 183
Piedmont, SC 29673
Tech Support(864) 907-6004 (call or text)
Email: Tech@DDMWorks.com

Trifecta Tune for Solstice/Sky — DATA LOGGING —

1. Connect to the vehicle via OBD2 port and Laptop USB Port and open EZFlash from the start menu.

2. Follow prompts:
Vehicle Info--> Data Log Vehicle



3. While connected drive the vehicle for 10-15 minutes as you would regularly.

We absolutely do not recommend, nor condone the operation of any vehicle in violation of your local traffic laws for the purpose of collecting live vehicle data. If you choose to collect data on a public street, please do so within the bounds of the law, and have an assistant on hand to operate the software.

4. Submit your log to sales@ddmworks.com, making sure to include your order number. While rare, if you experience any with drivability issues or warning codes please include detailed notes along with your log.

Turnaround times:

Due to the popularity of Trifecta products, datalogs are reviewed on a first-come, first-serve basis. *We are not the same company as Trifecta and cannot guarantee time estimates for tune updates.*

If the log was submitted without any feedback, or indication of a major drivability problem, Trifecta makes every effort to analyze your log, and if needed, provide an update to you in 1-2 weeks. If the log was submitted with feedback indicating a major drivability problem exists, or the vehicle is non-drivable for whatever reason, they will make every effort to analyze your log and provide an update to you in no more than two businesses days.

Follow-up:

In many cases, Trifecta's follow-up will simply be "everything looks great". This does not mean they quickly skimmed your datalogs and just made that conclusion, or otherwise aren't putting quality effort into it. Like DDMWorks, Trifecta spends between hundreds and thousands of hours testing the products they offer, and in many cases the tune is simply spot on. This is especially true if stock, or near-stock vehicles are being tuned. Be assured that every log is reviewed with the same amount of discretion and attention to detail.



119-A Hwy 183
Piedmont, SC 29673
Tech Support(864) 907-6004 (call or text)
Email: Tech@DDMWorks.com

Trifecta Tune for Solstice/Sky — Important Notes and Tips —

POWER LOSS:

Should your vehicle or laptop lose power, or connection from the vehicle be interrupted: 99% of the time, your ECM is NOT damaged, "fried", or "bricked", and you may simply re-try the flash after ensuring your vehicle and laptop batteries are fully charged per EZ Flash Requirements.

SELECT-A-TUNE:

If you chose the Select-a-tune: Unless you requested otherwise, it is triggered via the Cruise Control button

Cruise Control ON = STOCK power

Cruise Control OFF = TUNED Power, be sure run at least 91 Octane gasoline while running tuned power

TRANSMISSION:

Automatic* Transmission Vehicles: The progress bar will reach 100% when it is done flashing the ECM, then begin from 0% again in order to flash the Transmission Control Module (TCM). Please let it run until it displays 'Module Writing Completed'

**Solstice and Sky Automatic Transmission Vehicles: The progress bar will reach 100% when it is done flashing the ECM. Please let it run until it displays 'Module Writing Completed'.*



119-A Hwy 183
Piedmont, SC 29673
Tech Support(864) 907-6004 (call or text)
Email: Tech@DDMWorks.com

Trifecta Tune for Solstice/Sky — Important Notes and Tips cont. —

EMISSIONS:

*Emissions related codes are not disabled by default per standard Trifecta policies ([DTC](#)) We absolutely do not recommend, nor condone violation of your states emissions laws. Read [Trifecta's policies](#) regarding this option and check your state's regulations before proceeding!

Catalyst efficiency and other emissions-related codes can be disabled by using the OBD2 DTCs & Readiness Monitors feature within EZ Flash.

This can be accomplished before flashing the tune by doing the following:

- Ensure you have downloaded the latest version of EZ Flash using the EZflash User Guide
- Open EZ Flash
- From the 'Program' menu select 'Adjust Tune Settings' and in the sub-menu select 'OBD2 DTC's & Readiness Monitors'
- This will bring up a new window with two sections.
- In the bottom section of the window, scroll through the list of codes until you find the one you want to disable and un-check the box next to the code.
- Click the 'OK' button. This will bring you back to the main EZ Flash window.
- The tune parameters have now been set and is ready to be flashed again.
- Flash the tune as you normally would.

DDMWorks is always ready to help!
If you have any questions do not hesitate to contact us!
Office: 864-438-4949
Tech Cell: 864-907-6004 (call or text)
Email: sales@ddmworks.com