

# DDMWorks



Automotive Performance Specialists

## DDMWorks Pro-Beam



The DDMWorks Pro-Beam is engineered to bring your rear stock cross member up to par and exceed the bracing found on race bred SCCA winning Solstices.

Installation time of the Pro-Beam depends on you and your mechanical skills. It is suggested that you read through the directions a few times to familiarize yourself with the components of the kit, and your car. Installation can be done on ramps or on jack stands whatever is more convenient for you.

If you are pretty handy with tools the Pro-Beam can be installed in under 30 minutes, however we suggest that you schedule at least an hour for the install.

### TOOLS NEEDED

Socket wrench
13mm socket and wrench
11/32" or 8mm drill bit
Power Drill
Metal punch hammer

#### Before we start installing the Pro-beam, you will need to do the following:

1. Put the car securely on jack stands and chock the front wheels.
2. Make sure that the car has had time to cool down since you will be working close to the exhaust.

### PACKING LIST

Item	Qty
Pro-beam -DDM-07-019	1
Left Front Bracket	1
Right Front Bracket	1
Left Rear Bracket	1
Right Rear Bracket	1
Large Fender Washer (M8 fender washer)	6
M8x1.25x25mm bolt (M8x25 Hex, blk)	8
M8 Washer (M8 flat washer, ss)	16
M8 Locking Nut (M8 nut, ss)	11
M8x1.25x100mm bolt (M8x100 Hex, ss)	3

# DDMWorks



119-A Hwy 183  
Piedmont, SC 29673

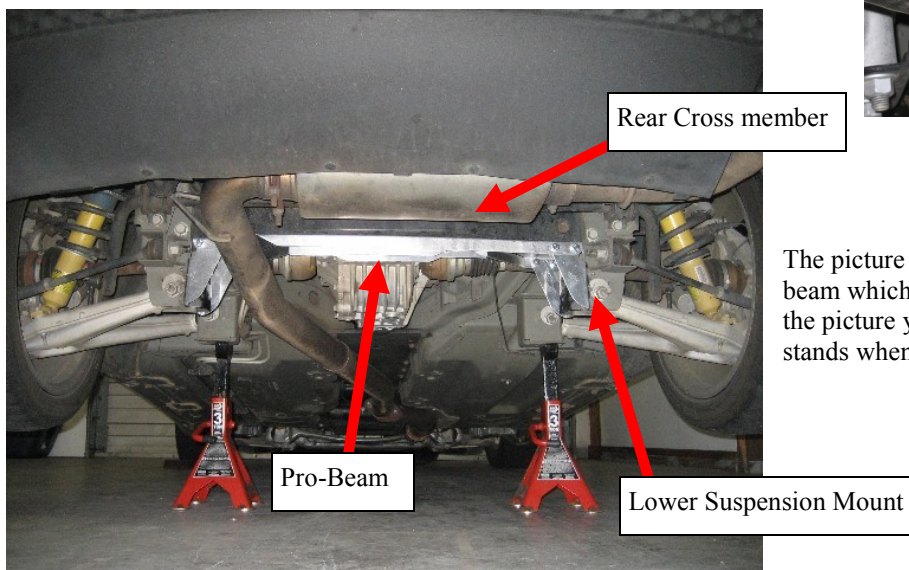
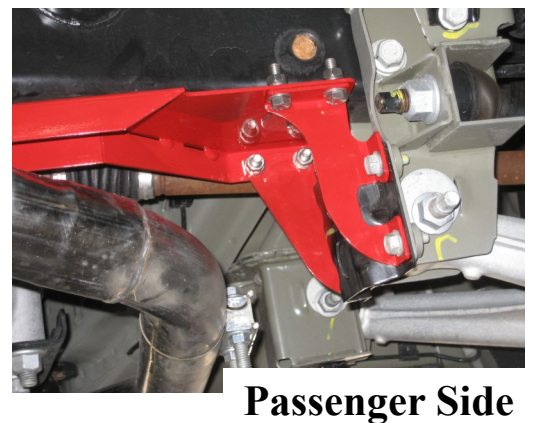
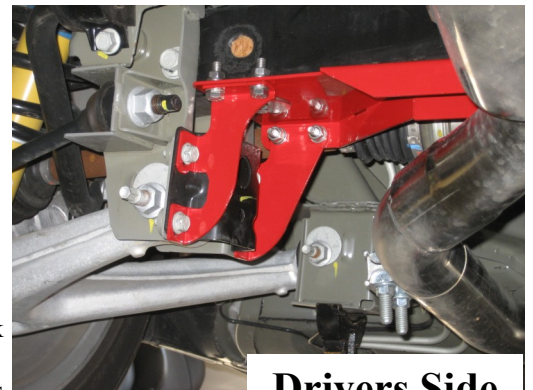
Automotive Performance Specialists

**Tech Support**  
(864) 907-6004  
Tech@DDMWorks.com

Rev. 12-6-11 IM

## Pro-Beam Install

1. Make sure your car is on flat level ground. Jack the rear of the car up and support the rear of the car with jack-stands. **NEVER WORK ON A CAR ONLY SUPPORTED BY A JACK—ALWAYS USE JACK STANDS.** Make sure to also secure the front wheels using wheel chocks so that the car does not roll forward.
2. Once the car is in the air, look at the center of the black cross member. The rear cross member is a black beam that goes across the rear of the car that the rear differential attaches to. In the center of this cross member you will see a hole in the cross member. Use the drill and drill bit and drill through this hole making sure to keep the drill as vertical as possible.
3. Once you have drilled this hole, find the long M8x100mm bolt. Set the Pro-beam up in place. There are 2 notches on the Pro-beam that will face towards the rear of the car.
4. With the Pro-beam set up in place, push the M8x100 bolt through the Pro-beam and through the hole that you drilled in the black cross member, put a nut on the back of that bolt to hold the beam in place.
5. Now that the Pro-beam is held up, loosen the 2 front 13mm head bolts that hold the suspension brace on the rear suspension mount. With those 2 bolts removed, set one of the Pro-beam support arms up in place. There are left and right versions of those arms.
6. With one arm in place, put the two bolts that you removed from the lower suspension mount back in, but do not tighten them yet, leave them loose.
7. At the top of the arm, use the supplied M8 hardware and to attach the arm to the Pro-beam. Leave these bolts loose at this point also.
8. Repeat these steps until you have all 4 arms attached to the Pro-beam, with the hardware loose.
9. With all 4 arms attached we need to mark the 2 other holes that need to be drilled. There is a hole on the Pro-beam on the drivers side and the passenger side. Use a punch to mark where these holes need to be drilled. Although you can drill the holes with the Pro-beam in place, you can drill easier if you remove it.
10. Once the 2 other mounting holes have been drilled, put the Pro-beam back up in place with all of the hardware loose. Use the M8x100 bolts to go up through the two holes on the side of the Pro-beam. Use one of the washers on the head of the bolt, insert it through the hole, on the top put another large fender washer followed by a nut to secure it. Do this to both sides.
11. You should have all 3 of the bolts that go through the cross member tight at this point. Now go back and tighten the bolt that go to the lower suspension mount next.
12. Lastly tighten the 8 bolts that attach the arms to the Pro-beam.
13. Once everything is tight, lower the car back down off of the jack-stands and go enjoy!



The picture to the left shows an uncoated Pro-beam which makes it a little easier to see. Also in the picture you can see where we put the jacks stands when working on the car.